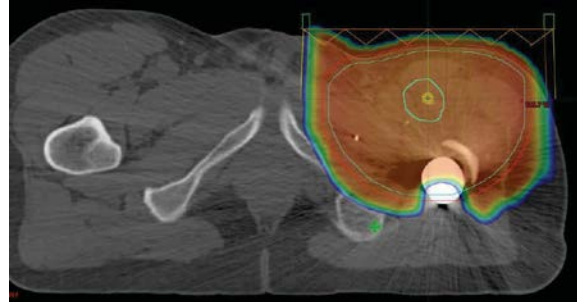


2018
Thomas Jefferson University
Medical Dosimetry Program
2nd Medical Dosimetry Continuing Education Day

Saturday May 5, 2018

Thomas Jefferson University
 Department of Radiologic Sciences
 Medical Dosimetry Program
Jefferson Alumni Hall
1020 Locust Street
Room 207
Philadelphia, PA 19107



This program will review a broad range of subjects relating to the practices of medical dosimetry in the field of radiation oncology. The course is intended for medical dosimetrists, physicists and radiation therapists.

The seminar has been submitted for Category A+ CE credits from the American Society of Radiologic Technology (ASRT) and Medical Dosimetrists Certification Board (MDCB) education credits.

| | | | |
|--------------|------------------------------------|--|----------------------|
| 7:30 - 8:00 | Registration Desk Open | | |
| 8:15 - 8:30 | Welcoming Remarks | | |
| 8:30 - 9:30 | Jennifer Jones | Utilization of Electronic Tissue Compensator for Breast and Chestwall Planning | Saint Luke's |
| 9:45- 10:45 | Jeanette Smith-Keil | Comparison of RapidArc Treatment Options for Head & Neck with Full Arcs | Medstar Rad America |
| 11:00 - noon | Kevin Sine | Introduction to Proton Therapy Planning | Procure |
| noon - 1:00 | Lunch | | |
| 1:15 - 2:15 | Deborah Kinneer & Jong-Han Hank Ho | Oddities of Radiation Therapy – Surprising Sights, Familiar Techniques | MD Anderson - Cooper |
| 2:30 - 3:30 | Joseph Bernhardt | Tomotherapy Hi-Art Planning Workflow | Robert Wood Johnson |
| 3:45 - 4:45 | Kevin Crawford | Pelvic Brachytherapy Treatment Planning | Fox Chase |

Hotel Information

Holiday Inn Express
 Midtown
 1305 Walnut Street

Self pay Parking

Walnut Towers
 800-834 Walnut Street
 Philadelphia, PA 19107

Directions

From New Jersey via the Ben Franklin Bridge:

- Cross the Ben Franklin Bridge.
- After the toll booth, stay in the left lane directing you to 8th Street.
- Turn left onto 8th Street to Arch Street.
- Turn right onto Arch Street to 10th Street.
- Turn left onto 10th Street and continue to the Jefferson campus.

From 76 East:

- Take Rt. 76 East; follow signs for Exit 344 (Central Phila/676 East).
- Take Exit 344 to Vine Street and follow Vine Street to 10th Street.
- Turn right onto 10th Street and continue to the Jefferson campus.

Registration

This event's registration and **\$75** payment can be done at:

<https://www.eventbrite.com/e/jeffersons-2nd-medical-dosimetry-continuing-education-day-tickets-43507836109>

Cancellation and Refund Policy:

1. Cancellations received via e-mail on or before 4/15/18 will receive a full refund.
2. No refund will be available on or after 4/22/18. No exceptions will be made.

Any questions, please contact - Shirley.Johnston@jefferson.edu